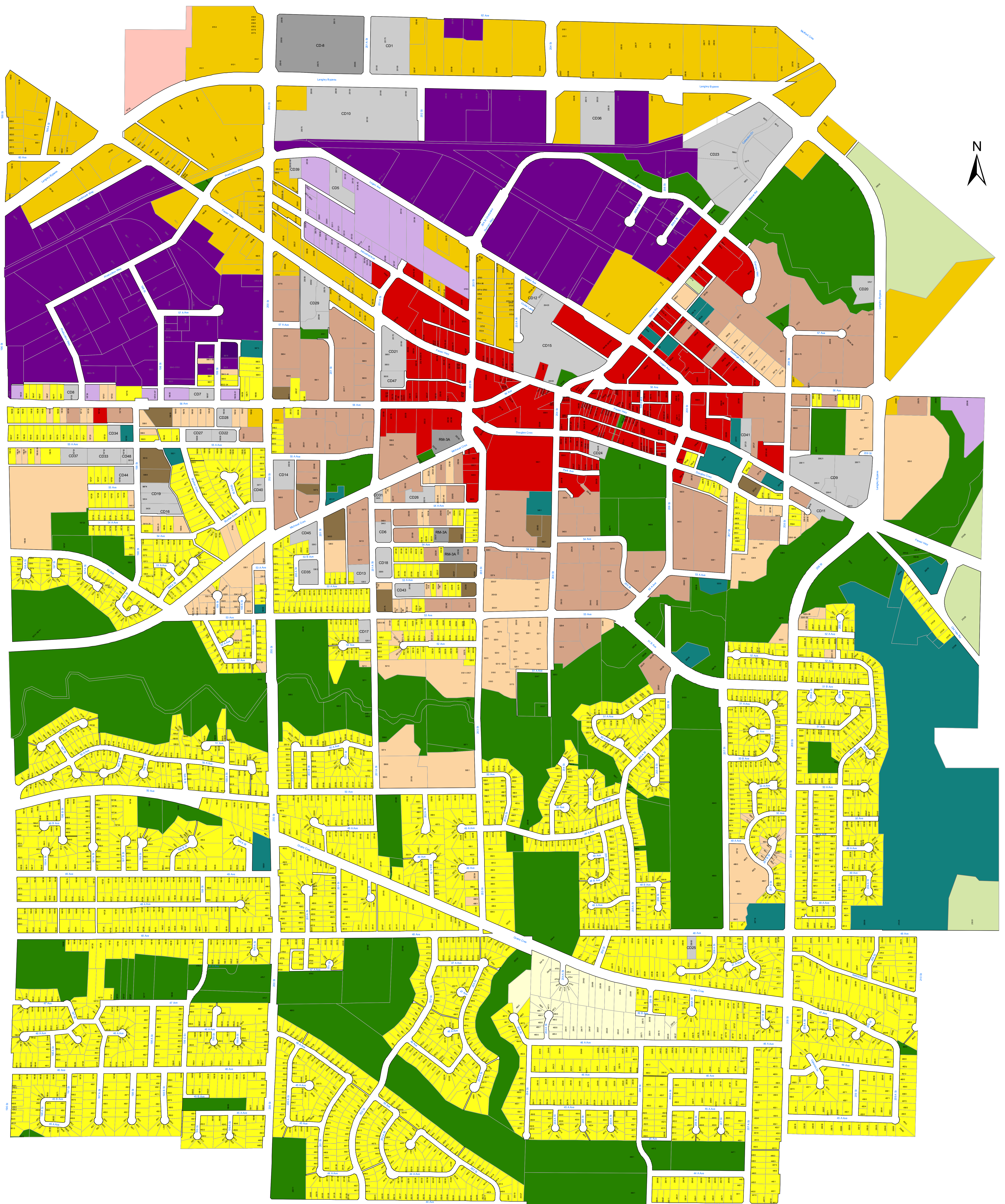


# CITY OF LANGLEY ZONING BYLAW, 1996, NO. 2100 SCHEDULE "A"



### Legend

RS1 Single Family Residential Zone	RM3 Multiple Residential High Density Zone	P1 Public Institutional/Recreation Zone	I3 Special Industrial Zone
RS2 Estate Residential Zone	C1 Downtown Commercial Zone	P2 Private Institutional/Recreation Zone	A1 Agricultural Zone
RM1 Multiple Residential Low Density Zone	C2 Service Commercial Zone	I1 Light Industrial Zone	CD Comprehensive Development Zone
RM2 Multiple Residential Medium Density Zone	C3 Specific Commercial Zone	I2 Service Industrial Zone	Bylaw 950 Zone

**Note:**  
In addition to the indicated zoning designations, some properties in the City of Langley may also be subject to Land Use Contracts. For further information on Land Use Contracts, please consult with Development Services Department staff.



1:4,000  
Prepared by:  
Development Services Department  
Date of Last Revision: July 25, 2017

